

# Parkheath

*Sold on Service*

---

**King Henry's Road NW3**  
**£2,037 PCM (£470 per week) - Camden Band E**



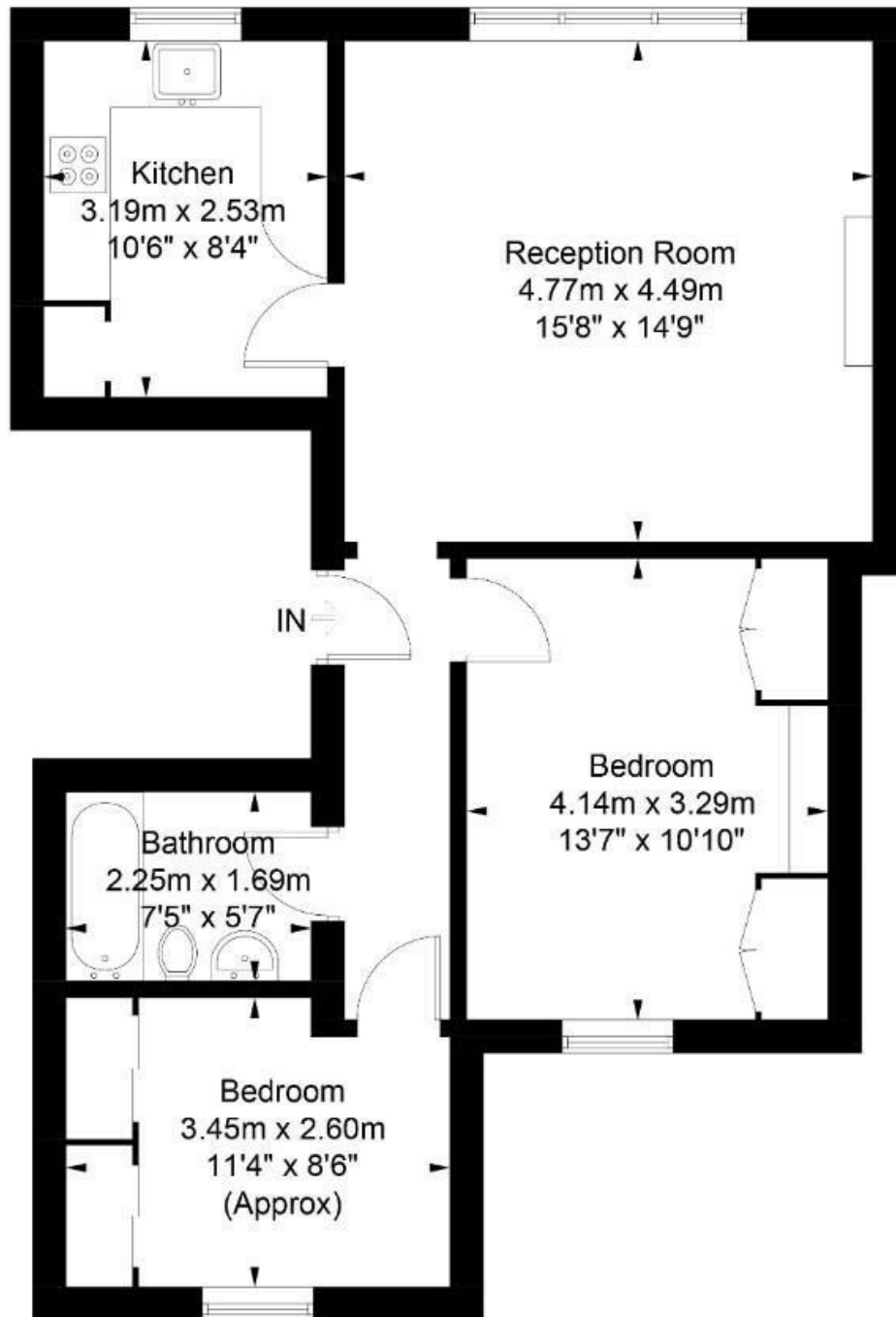
Well located 2 double bedroom apartment  
Bright and well proportioned accommodation  
Kitchen with washing machine  
Very close to Chalk Farm underground

2nd (top) floor in period conversion  
Large reception  
Wardrobes to both bedrooms  
Moments to Primrose Hill village and park

Belsize Park Office 020 7431 3104

# King Henrys Road

Approximate Gross Internal Area = 62.3 sq m / 671 sq ft



## Second Floor

Illustration for identification purposes only, measurements are approximate, not to scale. FloorplansUsketch.com © 2017 (ID380583)  
ELLIE CLAIRE PHOTOGRAPHY LTD

The particulars do not constitute part of an offer or contract. The particulars, including text, photographs and plans, are for the guidance only of prospective purchasers/tenants and must not be relied upon as statements of fact. The descriptions provided therein represent the opinion of the author and whilst given in good faith should not be construed as statements of fact. Nothing in these particulars shall be deemed a statement that the property is in good condition or otherwise or that any services or facilities are in good working order. All measurements are approximate